

RIKON



RELIABLE EUROPEAN
MANUFACTURER

OF HEAVY LIFTING
EQUIPMENT

CONTENT



ABOUT RIKON 4

RIKON HISTORY AND MISSION	6
RIKON SERVICES	8
OUTSTANDING EXPERTISE IN ENGINEERING	10



RPS/RSC CRANES 12

RPS-300	14
RPS-640	16
RPS-1600	18
RSC-630	20
SINGLE JIB DESIGN FOR RPS/RSC CRANES	22



RMG/RTG CRANES 24

RMG/A-RMG	26
RTG/A-RTG	28
REMOTE OPERATION AND AUTOMATION SYSTEMS	30



OTHER CRANES AND HANDLING EQUIPMENT 32

RMH	34
N-SERIES	36
GRABS	38

ABOUT RIKON

Your Trusted Partner in Cargo Handling Solutions

“RIKON” Joint Stock Company is a leading European manufacturer of heavy lifting equipment, specializing on Double Jib Level Luffing cranes, RMG cranes, RTG cranes, Mobile Harbour cranes, ship and offshore cranes. Established in 1991 in Riga, Latvia, but having roots dating back to 1954, RIKON possess more than 70 years of extensive experience in producing highest-quality cargo handling equipment.

Customers around the world choose RIKON for reliable, high-quality heavy lifting solutions tailored to their needs. Our clients include seaports, river ports, shipyards, logistics terminals, and industrial enterprises in the following countries: Latvia, France, Poland, Germany, Spain, Turkey, Kazakhstan, Uzbekistan, Bosnia and Herzegovina, Georgia, Slovakia etc.

At RIKON, we pride ourselves on our comprehensive production capabilities, featuring 10,000 m² of modern facilities with both railway and road access, as well as a private 130-meter jetty for

efficient logistics. Our workshops are equipped with advanced metal processing and welding installations, enabling us to maintain strict European quality standards throughout the entire lifecycle of our products. The Company is certified according to the requirements of ISO 9001:2015, ISO 3834-2:2021, EN 1090-1:2009+A1:2011 and many others.

Our dedicated team of 130 highly qualified specialists, including mechanical and electrical engineers, drives innovation and efficiency in crane manufacturing. With an in-house engineering office, we ensure independence in project execution, allowing us to meet the specific needs of shipyards, ports, and industrial enterprises.

From the preparation of steel sheets and pipe structures to the finishing touches with customer-specified coatings, our complete production cycle is fully in-house including software development. This includes an assembly area where we can erect cranes ready for operations and ship directly from our factory berth.



RIKON's production site on the Daugava River in Riga, nestled between the Milgrāvis tributary and the Sarkandaugava duct

RIKON HISTORY AND MISSION

At RIKON, we are not just building cranes. We are building a sustainable future for the world lifting and transportation industry.

RIKON traces its roots back to 1954 in Riga, Latvia, where its workshops initially produced and repaired various lifting equipment and handling devices. Since then, we have dedicated ourselves to a mission of manufacturing superior heavy lifting equipment tailored for diverse applications. Our commitment to enhancing operational efficiency, safety, and comfort has been the cornerstone of our growth and development throughout the years.

Over time, RIKON has gained significant recognition in the heavy lifting equipment sector, continually striving to meet and exceed market expectations. Our mission reflects a long-term commitment to excellence and sustainability in manufacturing, ensuring that we remain at the forefront of the industry.



Riga at 1954, Photos by Dominiks Gedzjuns

OUR BRAND VALUES

Quality

We are committed to exceptional craftsmanship in metalwork and high-quality hardware. Our in-house equipment integration and software development ensure reliable and efficient crane performance.

Reliability

We guarantee dependable performance and robust after-sales service, including on-site installation and comprehensive 24/7 maintenance and support, with all work conducted in-house for maximum control.

Customer-Centric

We prioritize understanding and meeting the diverse needs of our global customers by providing tailored solutions and excellent service.

Innovation

We continuously pioneer new technologies and solutions in crane manufacturing, focusing on unique designs and smart, energy-efficient operations.

Sustainability

We integrate environmentally friendly practices into our manufacturing processes and crane operations, promoting energy efficiency and reducing our environmental impact.

Global Reach

With a strong international presence and a diverse customer base, we are committed to expanding our market share and enhancing global partnerships.

Global Commitment

Worldwide supply of high-quality and energy-efficient cranes on a serial basis, with a proven track record built on integrity and a commitment to personalized service, ensuring every client receives tailored solutions and exceptional support.



RIKON SERVICES



From concept to operation

At RIKON, we provide end-to-end services to ensure the efficiency, safety, and longevity of your lifting equipment. Our expertise covers the entire lifecycle of cranes — from design to maintenance. The company continues to expand its production line, increase the list of partners and develop new promising areas following the course of sustainable development.

OUR SERVICES INCLUDE

Design

- Custom design & re-design
- Deep modernization, including implementing of crane automation and remote-control systems

High-Quality Manufacturing

- Production of cranes & other lifting handling and special purposes equipment to strict European standards

Logistics & Installation

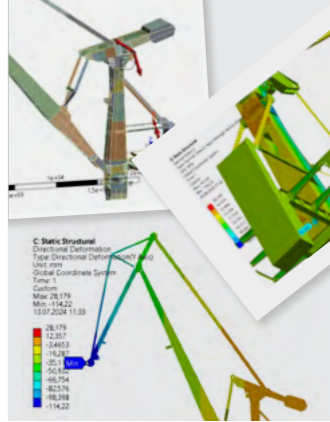
- Packing & transportation (assembled or disassembled)
- Full assembly, commissioning, and load testing

Maintenance & Support

- Repair and servicing for all crane types, including cranes manufactured by other companies (DJLL / RMG / RTG / Mobile / STS / Balance Cranes)

Turnkey project execution

- All kinds of work, from planning, designing and manufacturing to commissioning and maintenance, as well as other technical service are carried out by the company itself on the turn-key basis
- This is essential for the on-time project realization as all key tasks of the project are in the same hands



RIKON process includes crane design, manufacturing, logistics and installation on premises

OUTSTANDING EXPERTISE IN ENGINEERING

At RIKON, our in-house engineering office is comprised of highly skilled professionals specializing in every aspect of crane design and production. Utilizing cutting-edge software and advanced tools, our team ensures exceptional precision and quality in all engineering projects.

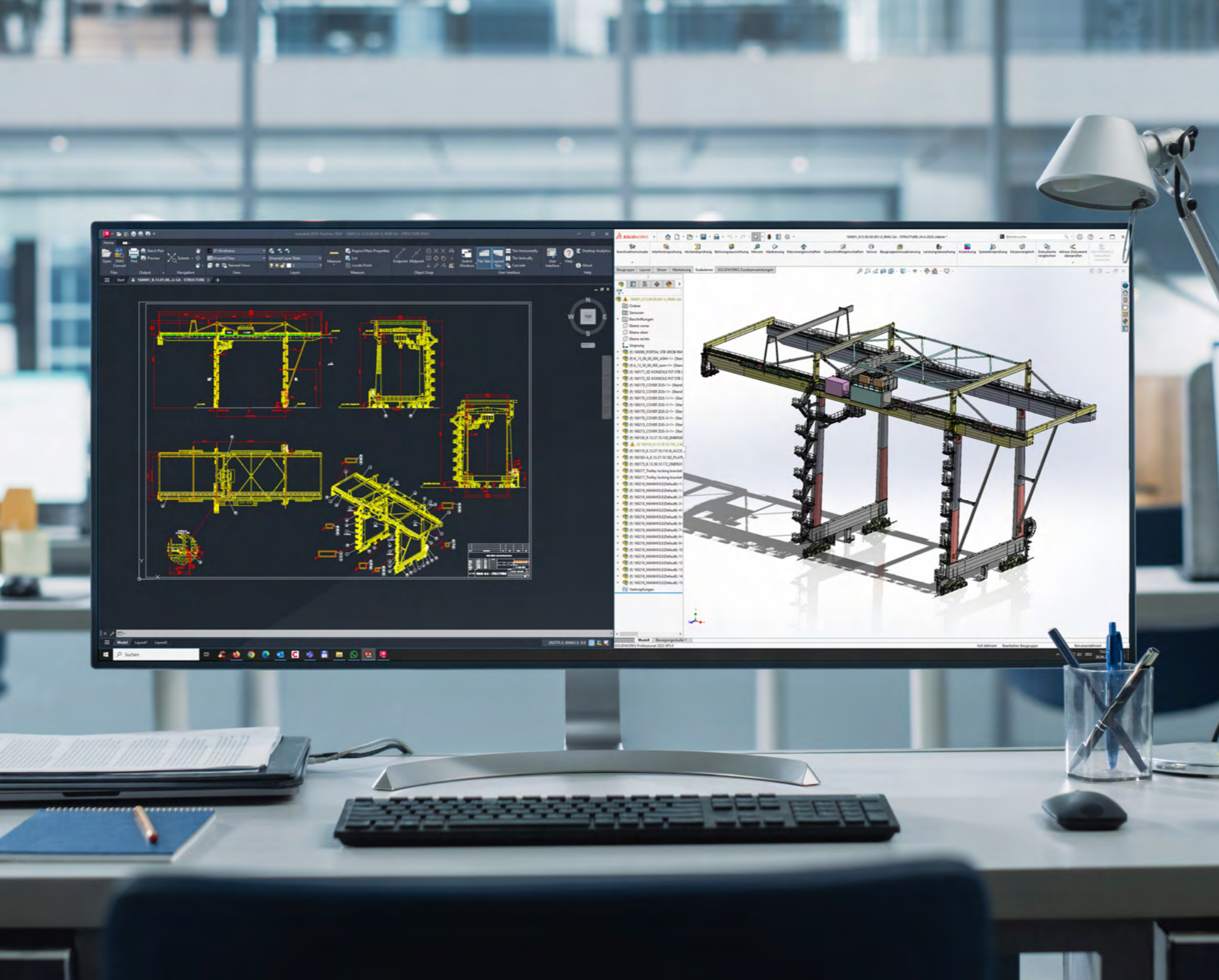
Our experts possess extensive experience, allowing us to successfully execute projects with unique or non-standard requirements. Through ongoing training and participation in industry workshops, our engineers consistently remain at the forefront of technological advancements.

RIKON's mechanical design engineers work collaboratively to develop detailed drawings

and comprehensive specifications. Every design undergoes thorough analysis to guarantee full compliance with industry standards.

Our electrical engineering team plays a crucial role in developing crane electrical systems and automating operations. Their expertise enables the integration of complex electrical solutions that significantly enhance both efficiency and safety.

By adopting a multidisciplinary approach, RIKON's engineering teams excel at managing large-scale and complex projects. Each design benefits from accumulated experience and continual feedback from operating organizations, ensuring ongoing innovation and improvement.





The main competence of RIKON is fully electric Double Jib Level Luffing cranes suitable for all types of cargo.

RPS – Double Jib Level Luffing cranes are high-performance, versatile lifting equipment designed for operation in hook, grab, magnet, lifting beam, and spreader modes, enabling efficient handling of general cargo, bulk and container.

RSC – Double Jib Level Luffing mounting (assembly) cranes are intended for use in shipbuilding operations, including sectional assembly, general fitting work, as well as lifting and moving individual (unitized) loads for shipbuilding and shiprepairing process.

Today, RIKON is one of the very few European companies capable of designing and manufacturing Double Jib Level Luffing cranes serially on its own.

RPS / RSC CRANES

RPS-300

FULLY ELECTRIC DOUBLE JIB LEVEL LUFFING CRANE

Performance of up to **400 tons/hour**

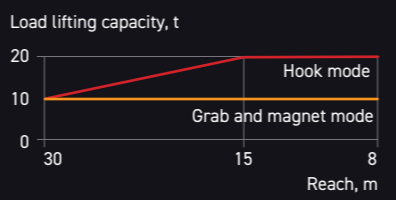
The RPS-300 is the smallest model in the series of fully electric Double Jib Level Luffing cranes, combining compact design with high efficiency. With an outreach of up to 36 meters, a lifting capacity of up to 25 tons in hook mode, 12 tons in grab mode, and an output of up to 400 tons per hour in grab mode, it is perfectly suited for a wide range of cargo handling tasks especially in space-limited environments. Designed for use in hook, grab, magnet and lifting beam modes, the RPS-300 ensures reliable and flexible operation when handling both general and bulk cargo.

The Double Jib system is offering excellent efficiency and precision. All core movements – including boom luffing, lifting and lowering of cargoes, slewing, and travelling – are powered by electric drives with energy recovery system, delivering smooth performance, high productivity, and low environmental impact.

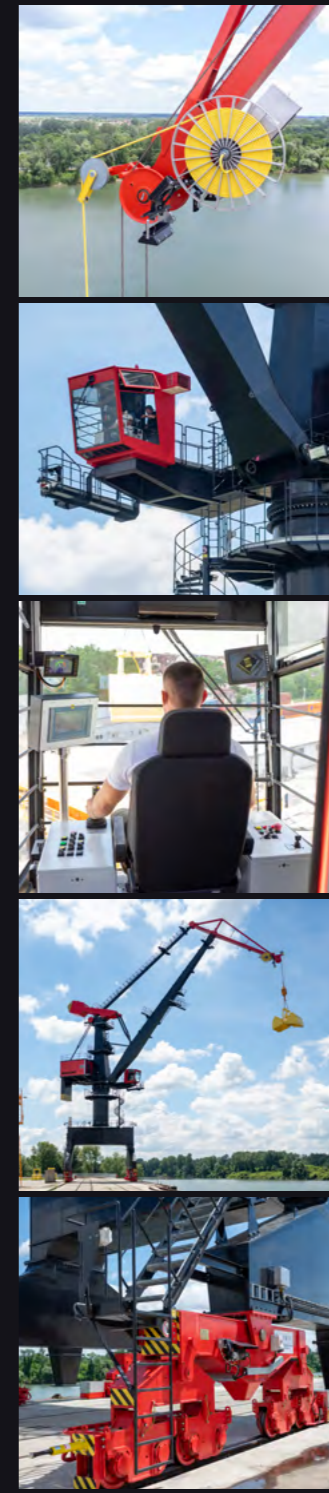
Boom reach ¹	
Minimum	8 m
Maximum	30 m
Load lifting capacity	
Grab mode	
at boom reach 30-8 m	10 t
Hook mode ²	
at boom reach 30-15 m	10-20 t
at boom reach 16-8 m	20 t
Crane gauge ³	10,5 m
Maximum load per wheel	22,5 t
Crane weight	160 t
Crane wheelbase	10,5 m

Lifting height	
with grab	20 m
with hook	22 m
Lowering depth	
with grab	15 m
with hook	15 m
Superstructure tail radius	7,0 m
Operating speeds	
Lifting and lowering	64-90 m/min
Turning	1,6-2,2 rpm
Luffing	64 m/min
Traveling	20 m/min
Operation mode according to ISO 4301/1	A8

Lifting capacity depending on boom outreach



¹ Possibility of boom outreach extension up to 36 m
² Possibility of lifting capacity increase in hook mode up to 30 t
³ Possibility of crane gauge increase up to 15.3 m



RPS-640

FULLY ELECTRIC DOUBLE JIB LEVEL LUFFING CRANE

Performance of up to **650 tons/hour**

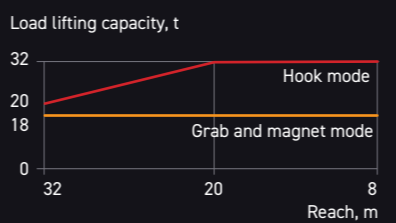
The RPS-640 features increased specifications, with an outreach of up to 40 meters, a lifting capacity of up to 40 tons in hook mode, 18 tons in grab mode, and an output of up to 650 tons per hour in grab mode is perfectly suited for a wide range of cargo handling tasks in hook, grab, magnet, lifting beam, and spreader modes.

The RPS-640 can also be realized with a slewing bearing design, as illustrated by the RPS-300 model.

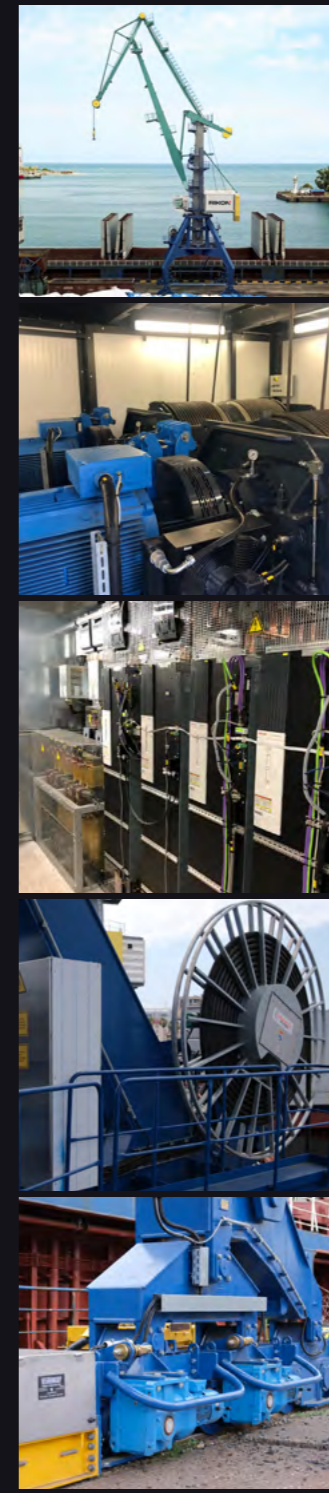
Boom reach ¹	
Minimum	8 m
Maximum	32 m
Load lifting capacity	
Grab mode	
at boom reach 32-8 m	18 t
Hook mode ²	
at boom reach 32-20 m	20-32 t
at boom reach 20-8 m	32 t
Crane gauge	10,5 m
Maximum load per wheel	22,5 t
Crane weight	220 t
Crane wheelbase	10,5 m

Lifting height	
with grab	22,9 m
with hook	25,6 m
Lowering depth	
with grab	15 m
with hook	15 m
Superstructure tail radius	7,0 m
Operating speeds	
Lifting and lowering	62-90 m/min
Turning	1,6 rpm
Luffing	60 m/min
Traveling	20 m/min
Operation mode according to ISO 4301/1 A8	

Lifting capacity depending on boom outreach



¹ Possibility of boom outreach extension up to 40 m
² Possibility of lifting capacity increase in hook mode up to 40 t



RPS-1600

FULLY ELECTRIC DOUBLE JIB LEVEL LUFFING CRANE

Performance of up to **1600 tons/hour**

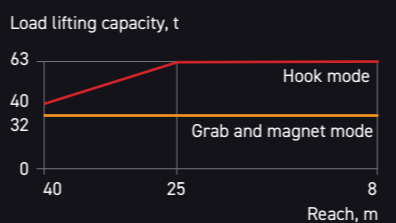
The RPS-640 is Double Jib Level Luffing crane with the highest lifting capacity in the RIKON RPS lineup, with an outreach of up to 60 meters, a lifting capacity of up to 200 tons in hook mode, 52 tons in grab mode, and an output of up to 1500 tons per hour in grab mode is perfectly suited for a wide range of cargo handling tasks in hook, grab, magnet, lifting beam, and spreader modes. The RPS-640 is an ideal solution for seaports, river ports, terminals, and industrial facilities.

The RPS-1600 can also be realized with a slewing bearing design, as illustrated by the RPS-300 model.

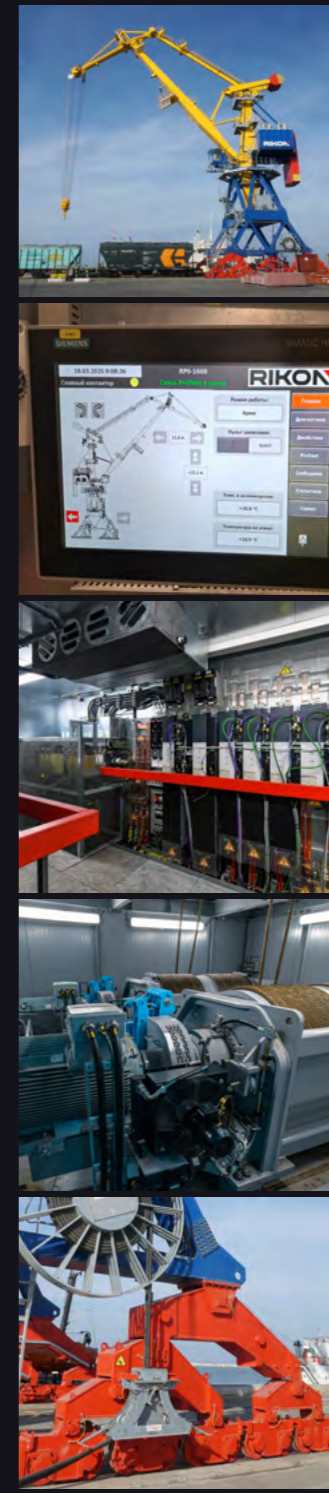
Boom reach ¹	
Minimum	9 m
Maximum	40 m
Load lifting capacity	
Grab mode ²	
at boom reach 40-9 m	32 t
Hook mode ³	
at boom reach 40-25 m	40-63 t
at boom reach 25-9 m	63 t
Crane gauge ⁴	10,5 m
Maximum load per wheel	23 t
Crane weight	490 t
Crane wheelbase	10,5 m

Lifting height	
with grab	29 m
with hook	32 m
Lowering depth	
with grab	23 m
with hook	20 m
Superstructure tail radius	7,5 m
Operating speeds	
Lifting and lowering	64 m/min
Turning	1,4-1,7 rpm
Luffing	60 m/min
Traveling	20 m/min
Operation mode according to ISO 4301/1 A8	

Lifting capacity depending on boom outreach



¹ Possibility of extension up to 55 m
² Possibility of increasing lifting capacity in bucket mode up to 50 t
³ Possibility of increasing lifting capacity in hook mode up to 200 t
⁴ Possibility of gauge increase up to 15.3 m



RSC-630

MOUNTING CRANE

The RSC-630 is a Mounting crane designed for shipbuilding operations, including sectional mounting, assembly work, and the lifting and handling of single unit loads. The Double Jib system is offering excellent efficiency and precision. All primary movements, such as boom luffing, lifting and lowering of loads, slewing, and traveling, are powered by electric drives, delivering smooth performance, high productivity, and low environmental impact. The cranes are equipped with the Micromotion system and are perfect for complex installation operations.

The RSC-630 combines advanced engineering with practical high performance and reliability, making it an essential tool for shipbuilding companies and shipyards for completion and assembly operations. The crane has a main hoist lifting capacity of up to 500 tons and an auxiliary hoist lifting capacity of up to 50 tons, with a boom outreach of up to 100 meters and a lifting height of up to 100 meters.

Boom reach	
Main hoist ¹	
minimum	9 m
maximum	45 m
Auxiliary hoist	
minimum	11 m
maximum	48 m
Load lifting capacity	
Main hoist ²	
at boom reach 45-20 m	8-30 t
at boom reach 20-18 m	30-35 t
at boom reach 18-9 m	35 t
Auxiliary hoist ³	
at boom reach 48-11 m	6 t
Crane gauge	10,5 m
Maximum load per wheel	35 t

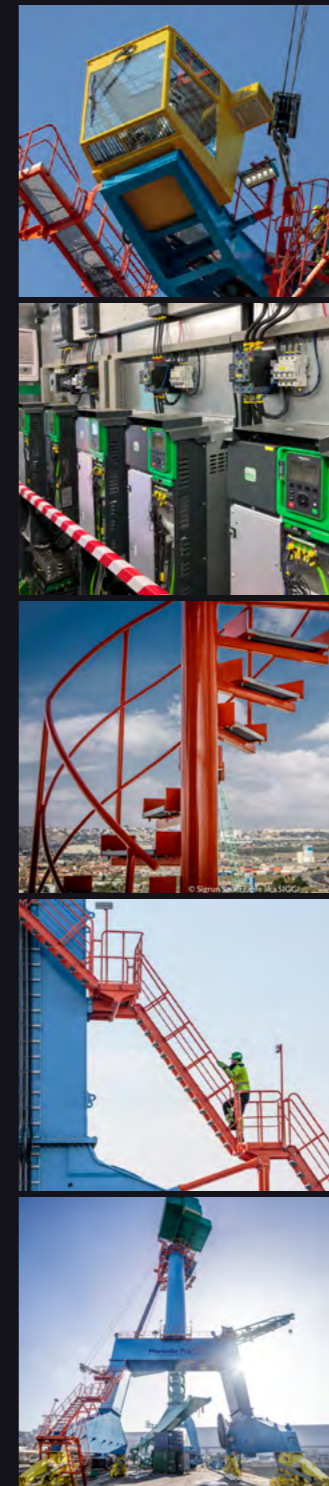
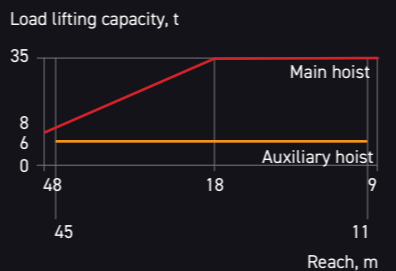
Crane weight	350 t
Crane wheelbase	13 m
Lifting height⁴	
Main hoist	50 m
Auxiliary hoist	50 m
Lowering depth	
Main hoist	17 m
Auxiliary hoist	17 m
Superstructure tail radius	7,5 m
Operating speeds	
Main hoist lifting/lowering	10 m/min
Auxiliary hoist lifting/lowering	40 m/min
Turning	0,5 rpm
Luffing	40 m/min
Traveling	30 m/min

Operation mode according to ISO 4301/1 A6

¹ Possibility of main hoist extension up to 100 m
² Possibility of increasing main hoist lifting capacity up to 500 t
³ Possibility of increasing auxiliary hoist lifting capacity up to 50 t
⁴ Possibility of increasing lifting height up to 100 m



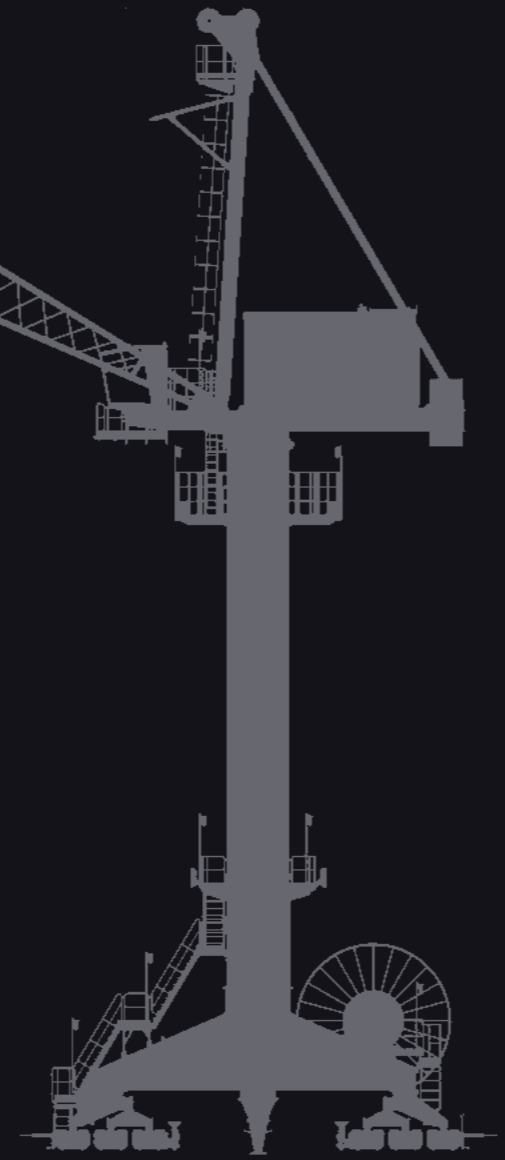
Lifting capacity depending on boom outreach



SINGLE JIB DESIGN FOR RPS/RSC CRANES

All crane types shown in this section can be designed and manufactured with a Single Jib system if required by Customers.

- RPS-300 ✓
- RPS-640 ✓
- RPS-1600 ✓
- RSC-630 ✓



Gantry container cranes are highly productive lifting equipment which designed for handling sea 20-, 40-, and 45- foot containers in ports and container terminals.

Due to the particular design of this type of crane, they are characterized by great reliability and stability.

RMG – Rail Mounted Gantry cranes.

RTG – Rubber Tired Gantry cranes.

As an option, the crane can be equipped with lifting appliances of different types and capacities - hook, beam, grab, magnet, etc.

RMG/RTG CRANES

RMG/A-RMG

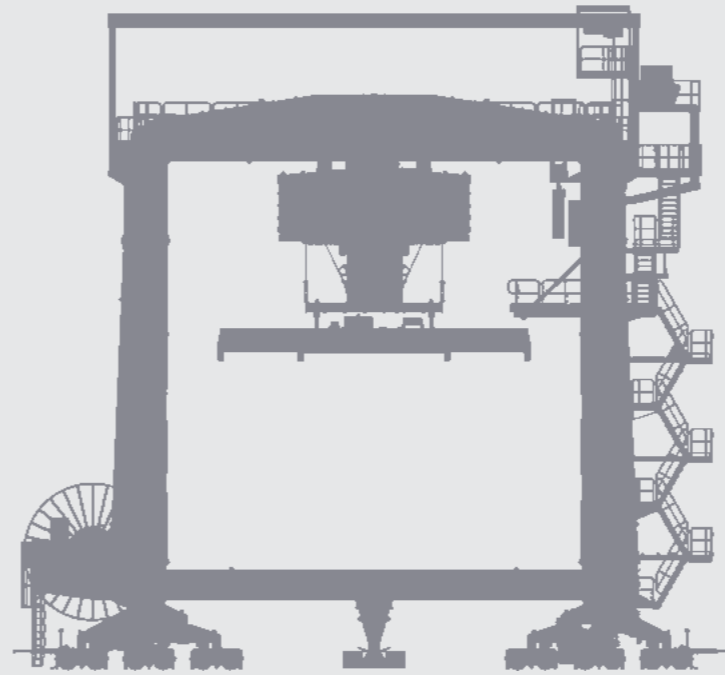
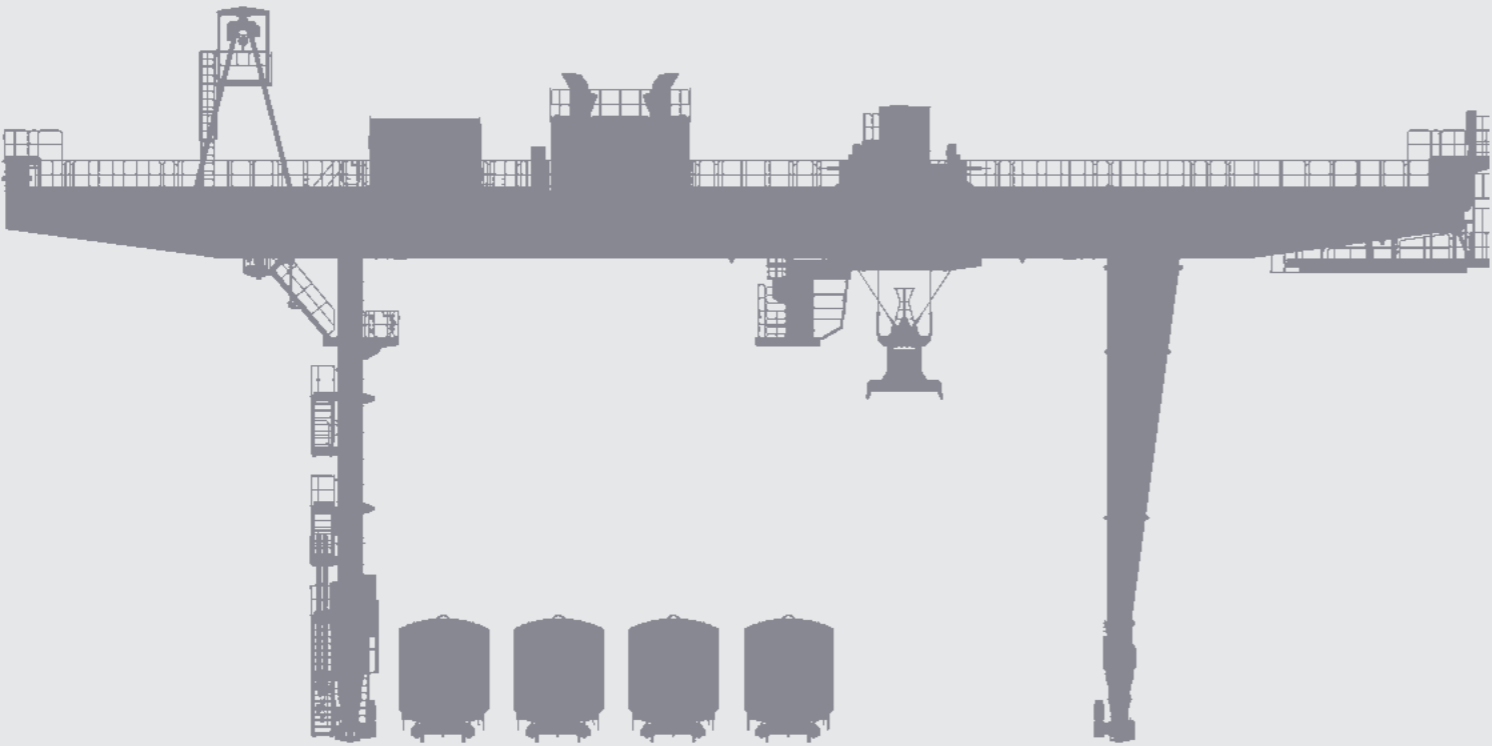
RAIL MOUNTED GANTRY CONTAINER CRANE

The RMG container crane offers high efficiency and reliability, with electric-driven main operation movements. It can be configured with rotary or non-rotary trolleys, and with or without cantilevers, suitable for use in container terminals and ports. With a lifting capacity up to 50 tons, crane gauge up to 80 meters, and a lift height of 26 meters, it handles any heavy loads effectively.

The A-RMG version features fully automated operation mode for even higher productivity.



AUTOMATED RAIL MOUNTED GANTRY CONTAINER CRANE



Load lifting capacity¹	
Under the spreader	43 t
Under the pulley frame	50 t
Crane gauge²	
	25 m
Trolley gauge	
	15,6 m
Trolley wheelbase	
	2,52 m
Distance between gantry legs in the load passage zone	
	15,5 m
Right and left consoles reach³	
	6 m
Maximum load per wheel	
	22,5 t
Spreader turning angle	
	360°
Crane operation speeds	
Maximum load lifting/lowering speed	30 m/min
Lifting/lowering speed without cargo	60 m/min
Maximum load trolley traveling speed	100 m/min
Maximum load crane traveling speed	120 m/min
Maximum load slewing speed	2 rpm
Crane operation mode category as per ISO 4301/1 during transshipment of:	
Containers, gross weight 30.5 t	A8
Containers, gross weight 43 t	A5
Breakbulk cargo, gross weight up to 50 t	A5

¹ Possibility of capacity increase up to 50 t
² Possibility of extension up to 59 m
³ Possibility of extension up to 16 m



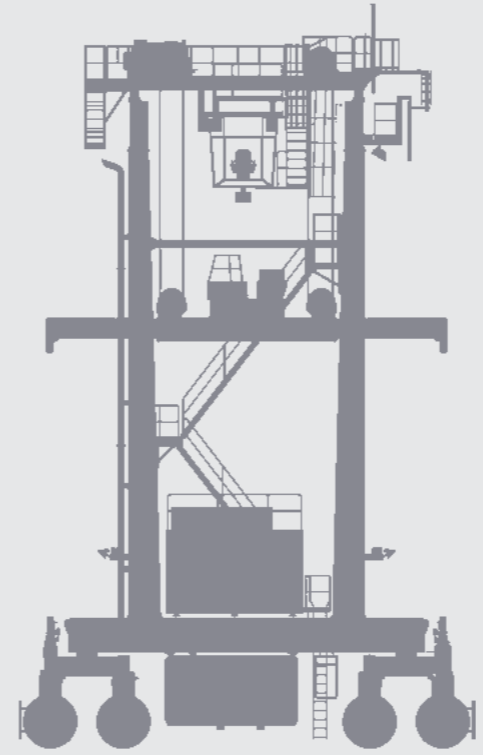
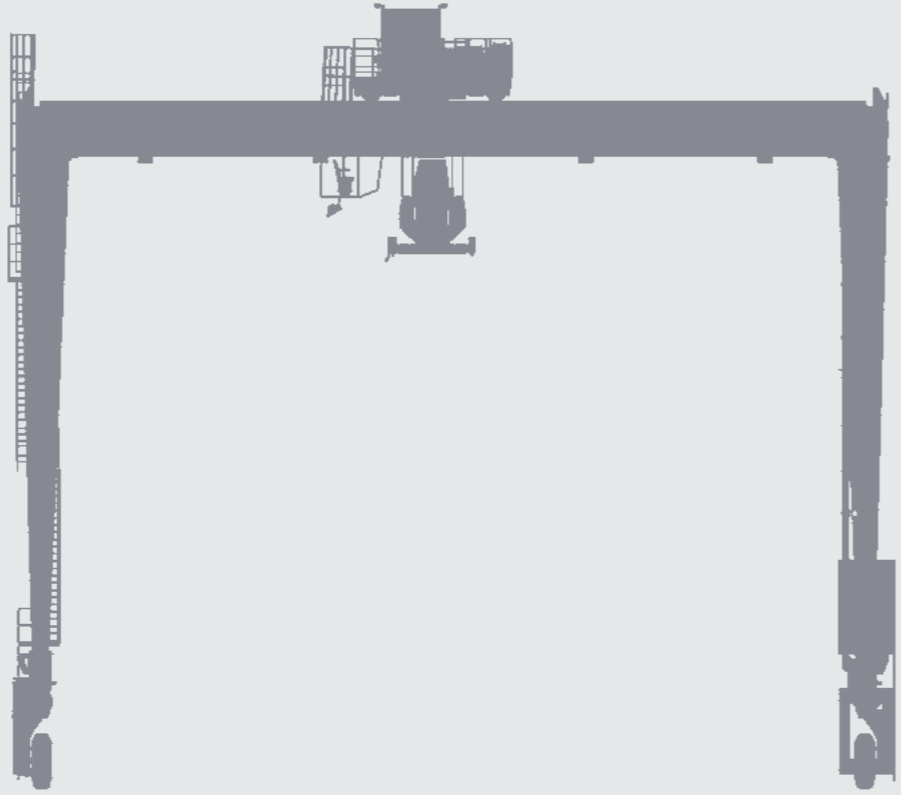
RTG / A-RTG

RUBBER TIRED GANTRY
CONTAINER CRANE

AUTOMATED RUBBER TIRED
GANTRY CONTAINER CRANE

RTG cranes provide flexible container handling with 41-65 t capacity and 1-over-7 stacking, available with optional cargo beam for oversized cargo operations. Available in diesel-electric, hybrid or electric versions, our cranes feature up to 10 row spans.

The automated A-RTG model offers automated positioning and unmanned operation. Ideal for medium and large terminals, these track-independent cranes deliver cost-effective mobility without rail constraints, combining robust performance with operational efficiency in demanding environments.



Load lifting capacity	
Under the spreader, single	41 / 45 / 50 t
Under the spreader, twin	50 / 60 / 65 t
Gantry span	
	up to 10 containers
Lifting height	
	up to 1 over 7 containers
Crane wheelbase	
	6,4 / 6,9 / 9,6 m
Main power supply	
Classic RTG	Diesel engine generator and Constant Speed or Variable Speed Generator (VSG)
E-RTG	Cable reel or Busbar
Hybrid RTG	Battery system plus VSG engine
Lifting/lowering speed	
With SWL	20 / 26 / 30 m/min
With empty spreader	58 / 52 / 60 m/min
Trolley traveling speed	
	70 m/min
Crane traveling speed	
	130 m/min

REMOTE OPERATION AND AUTOMATION SYSTEMS

Rikon stays ahead by continuously adapting to emerging market trends and customer needs.

We deliver innovative solutions that keep our clients competitive in a rapidly evolving landscape:

- ▼ **Advanced Crane Automation:** RIKON leads the industry with cutting-edge A-RMG crane designs featuring advanced automated operation mode that enhance efficiency, safety, and productivity while lowering operating costs and minimizing human error. Our engineers specialize in both mechanical and electrical design, ensuring that automation is seamlessly integrated into all crane systems.
- ▼ **ROS - Remote Operation System:** RIKON has developed own remote-operation system for gantry cranes, allowing operators to manage crane operations conveniently from their offices, improving operational flexibility and oversight.
- ▼ **RIKON Connect:** RIKON has developed a smart monitoring system for lifting equipment. It monitors the status of all crane components in real time, alerts you to faults and helps you plan maintenance. Reduces repair costs, prevents accidents and extends equipment life.



ROS working environment for gantry cranes remote operation



JSC RIKON specializes in the design and manufacturing of Mobile Harbour, Ship and Offshore cranes, providing robust lifting solutions for various maritime applications. Additionally, RIKON supplies a range of grabs tailored to complement all our cranes, ensuring optimal performance and versatility in handling diverse cargo.

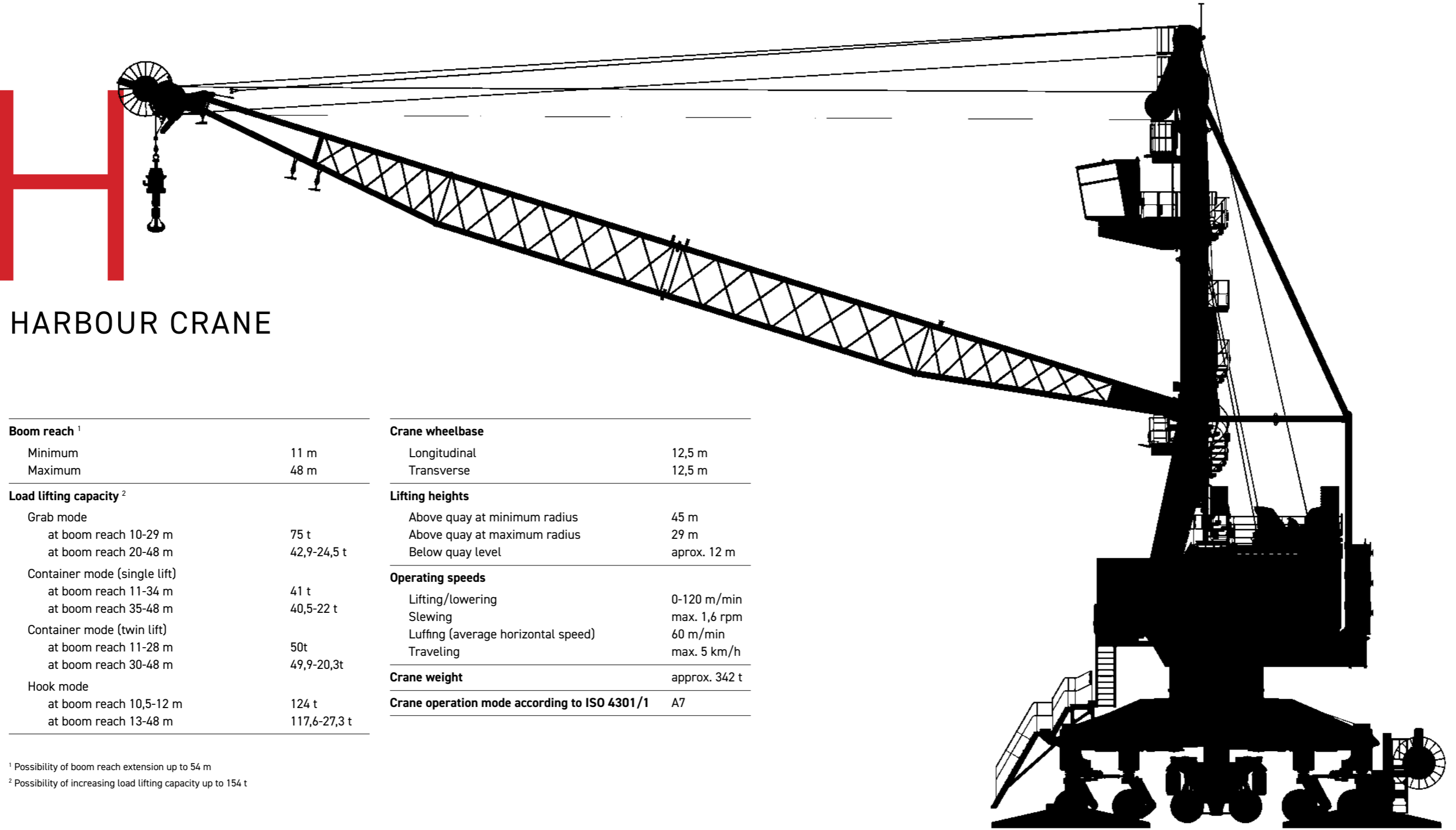
OTHER CRANES AND HANDLING EQUIPMENT

RMH

FULLY ELECTRIC MOBILE HARBOUR CRANE

RIKON's Mobile Harbour cranes are engineered for efficiency and reliability, making them perfect for handling diverse cargo in busy port environments. With a lifting capacity of up to 200 tons, a maximum outreach of 60 meters, and a lifting height of up to 55 meters, these cranes can effectively manage heavy loads and large containers. They are designed to operate in various configurations, offering flexibility for different loading and unloading scenarios.

Equipped with advanced technology and **electric-driven** movements, RIKON's Mobile Harbour cranes enhance safety and productivity without the use of hydraulic components. Featuring intuitive controls and ergonomic designs for operator comfort, these cranes are built to withstand demanding port conditions, ensuring long-lasting performance.



Boom reach ¹	
Minimum	11 m
Maximum	48 m
Load lifting capacity ²	
Grab mode	
at boom reach 10-29 m	75 t
at boom reach 20-48 m	42,9-24,5 t
Container mode (single lift)	
at boom reach 11-34 m	41 t
at boom reach 35-48 m	40,5-22 t
Container mode (twin lift)	
at boom reach 11-28 m	50t
at boom reach 30-48 m	49,9-20,3t
Hook mode	
at boom reach 10,5-12 m	124 t
at boom reach 13-48 m	117,6-27,3 t

Crane wheelbase	
Longitudinal	12,5 m
Transverse	12,5 m
Lifting heights	
Above quay at minimum radius	45 m
Above quay at maximum radius	29 m
Below quay level	aprox. 12 m
Operating speeds	
Lifting/lowering	0-120 m/min
Slewing	max. 1,6 rpm
Luffing (average horizontal speed)	60 m/min
Traveling	max. 5 km/h
Crane weight	
	approx. 342 t
Crane operation mode according to ISO 4301/1	
	A7

¹ Possibility of boom reach extension up to 54 m
² Possibility of increasing load lifting capacity up to 154 t



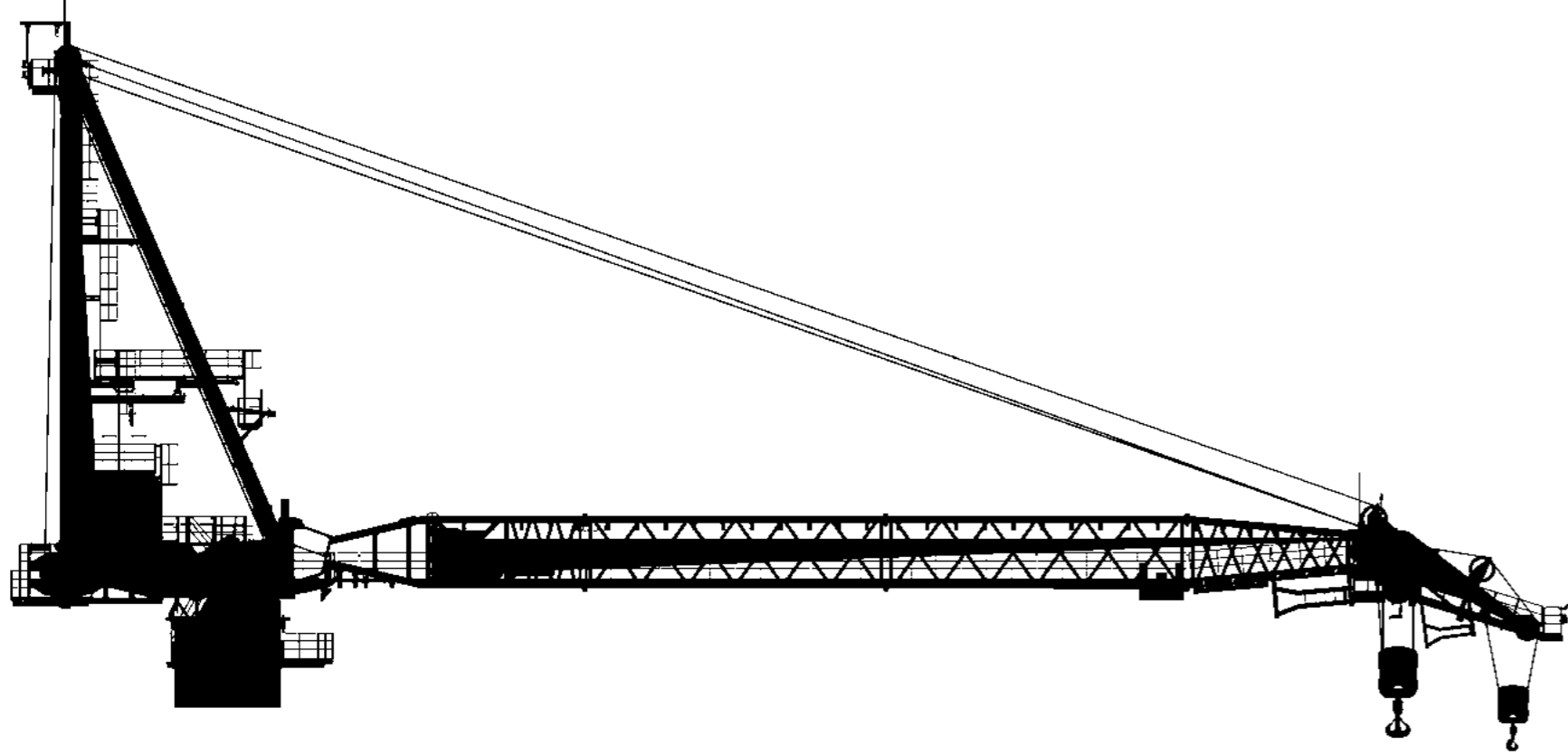
N-SERIES

SHIP AND OFFSHORE ELECTRO HIDRAULIC CRANES/MANIPULATORS



RIKON Ship and Offshore Cranes deliver robust performance in demanding marine environments. Built with corrosion-resistant materials, these cranes withstand harsh conditions while offering adaptable designs for shipbuilding industry, and offshore operations.

RIKON Ship and Offshore Cranes provide reliable performance in demanding marine environments. Constructed with corrosion-resistant materials, these cranes are designed to withstand harsh conditions while offering adaptable designs for the shipbuilding industry and offshore operations. Our cranes are also available in an Arctic version, designed to operate efficiently in temperatures as low as -60°C.



N-4300

Boom reach main hoist	
Minimum	7 m
Maximum ¹	26 m
Boom reach auxiliary hoist	
Minimum	9,5 m
Maximum	41 m
Lifting capacity (SWL)	
Main hoist ²	150 t
Auxiliary hoist	35 t
Rotation range	360°

¹ Possibility of extension up to 100 m

² Possibility of capacity increase up to 1000 t



GRABS

GRIPPING DEVICES

RIKON grabs are designed for optimal performance and versatility in material handling. Compatible with our cranes, they efficiently lift and transport bulk materials such as coal, grain, and scrap metal and more.

We offer two types of clam shell grabs and six clamshell grabs, each tailored to accommodate various weights and load types. Produced from high-quality, corrosion-resistant materials, our grabs ensure durability and reliability in demanding environments.



FOUR ROPE TWO CLAMSHELL GRABS

Crane lifting capacity	20 t	18 t	18 t	22 t	25 t	32 t	32 t	32 t	32 t	32 t	32 t	50 t	53,6 t
Purpose	coal	coal	metal-scrap	coal	iron ore concentrate	iron ore concentrate	iron ore concentrate	coal	agribulk	metal scrap	pig iron	coal	agribulk
Density of material	1 t/m ³	1 t/m ³	2 t/m ³	1 t/m ³	3 t/m ³	2,2 t/m ³	2,5 t/m ³	1 t/m ³	0,7 t/m ³	2 t/m ³	3,5 t/m ³	1 t/m ³	0,7 t/m ³
Grab volume	12 m ³	10 m ³	4,5 m ³	14 m ³	5,5 m ³	10 m ³	9 m ³	20 m ³	30 m ³	9,2 m ³	6 m ³	35 m ³	48 m ³
Grab dead weight	7,8 t	7,7 t	9 t	8,4 t	8,3 t	9,9 t	9,9 t	12,3 t	12 t	14 t	11 t	16,5 t	20 t



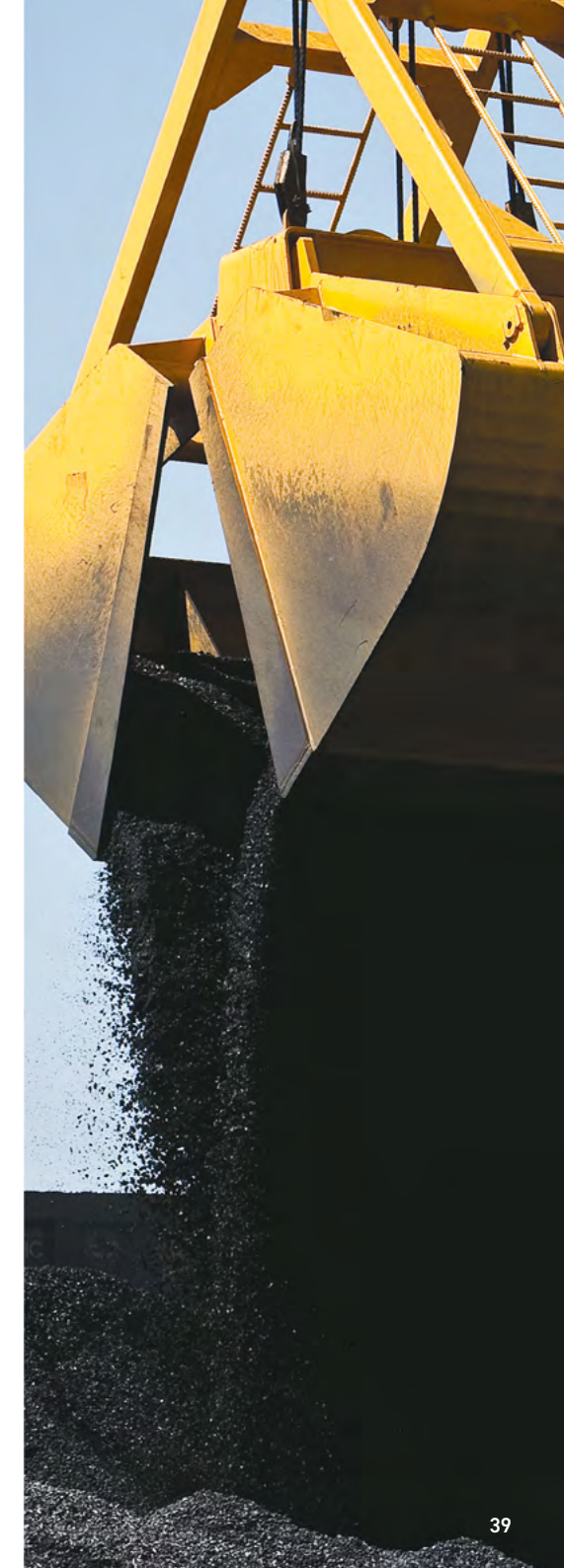
FOUR ROPE SIX CLAMSHELL GRABS

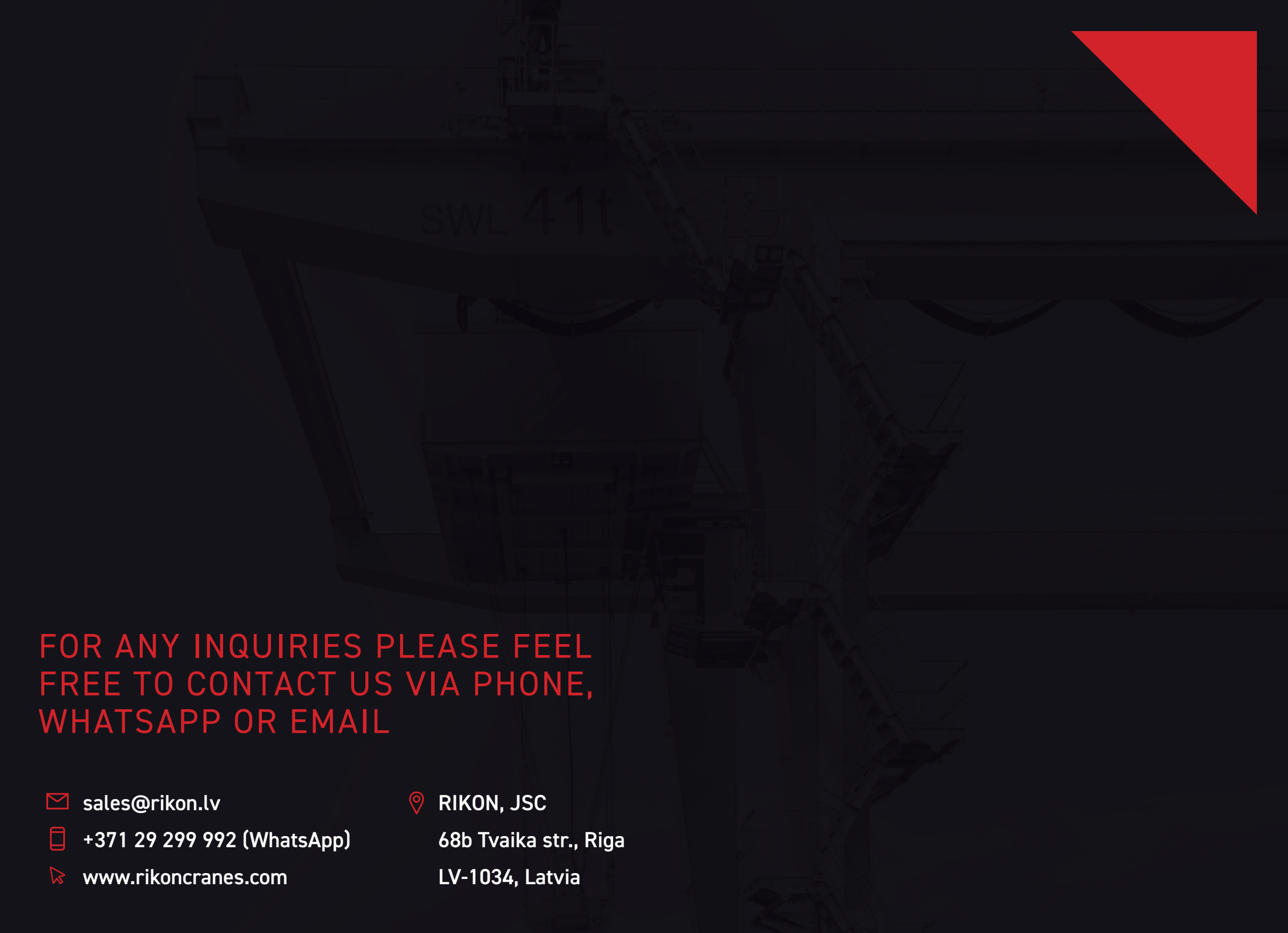
Crane lifting capacity	10 t	10 t	16 t	16 t	16 t
Purpose	metal scrap	pig iron	pig iron	limestone rock	metal scrap
Density of material	0,55 t/m ³	1 t/m ³	1,55 t/m ³	2,1 t/m ³	3 t/m ³
Grab volume	15 m ³	9 m ³	5,8 m ³	4,7 m ³	3,5 m ³
Grab dead weight	7,2 t	6,7 t	6,2 t	6 t	5,3 t



FOUR ROPE THREE CLAMSHELL TIMBER GRAB

Crane lifting capacity	10 t	Cargo weight	max. 6,7 t
Clearance area of normally closed grab	2 m ²	Length of cargo	max. 6 m
Clearance area of fully closed grab	0,3 m ²	Multiplicity of polypast	4 pcs
Dead weight	3,3 t	Number of polypasts	3 pcs
		Diameter of polypast rope	23,5 mm





FOR ANY INQUIRIES PLEASE FEEL
FREE TO CONTACT US VIA PHONE,
WHATSAPP OR EMAIL

✉ sales@rikon.lv

📱 +371 29 299 992 (WhatsApp)

🖱 www.rikoncranes.com

📍 RIKON, JSC

68b Tvaika str., Riga

LV-1034, Latvia